

# LAKE MINNIE BELLE MESSENGER

A Newsletter from the Lake Minnie Belle Improvement Association

Spring 2018

## Lakeshore Treatment for Curly Leaf Pondweed and Eurasian Milfoil

We will be treating Lake Minnie Belle for Curly Leaf Pondweed and Eurasian Milfoil this spring and summer. We have retained Clarke Companies again this year to assist us with lake survey, analysis, permit applications and the treatment process. The exact acreage and areas of treatment will be determined after Clarke has completed the pre-treatment survey early in May. The costs of treatment will be \$350 per acre for both Curly Leaf Pondweed and Eurasian Milfoil plus the survey and permit applications fees. Estimated area of coverage is about 20 acres. Clarke will be responsible for posting notification signs and/or buoys in the treatment areas. Minnesota DNR treatment signs will be posted on those properties that are within 150 feet of all treatment areas. It will be the responsibility of the shoreline owner to remove the notification signs on their property. Signs can be removed approximately 10 to 14 days after treatment for curly leaf and 21 days after treatment of milfoil.

### **IF YOU WISH TO OPT OUT OF THE TREATMENT ON YOUR LAKE- SHORE, YOU MUST COMPLETE AND RETURN THE INSERT FORM IN THIS NEWSLETTER.**

If you are considering treating a part of your lakeshore for vegetative growth you must receive a DNR Aquatic Management permit. Clarke Companies and Midwest Aquacare have been used in the past.

These companies will assist you with the permitting and treatment.

## Welcome back to the Lake!

Tom Hess, Retiring Director and Board Chairman

Welcome back to Lake Minnie Belle. Don't know if you wintered here or went where it was warm, but spring has finally arrived!

I don't care if you believe in global climate change but all of the data collected in the past 15-20 years says it's happening. Changes have happened throughout history but never at the pace it's changing now. The association changed the dues again this year, and I have talked to many of you who didn't like it. You don't mind so much the dollars – it's the abrupt change that irritates!

When the association was formed around 1970 you could buy gasoline for 24 cents. Add a zero to the end of that and oh, it's \$2.40. So it is with the dues. It was \$10 in 1970. The math is easy. I made \$1.92 starting pay at the Green Giant in Glencoe about that long ago. Wish the kids in high school could work the summer for \$19 an hour now. Hope I made my point and I'm sorry about the abrupt change and the irritation it caused.

What are we going to do with all that money you guys gave us this year? Well, this year we put almost \$20,000 in our AIS account that we will only use to fight those invasive species when we get them. I didn't say "if" we get them, and there are more nasty ones on the way. Science says as the climate changes there will be more species that can live and thrive here. The rate of change is what makes that a challenge. Nature doesn't have time to ARM itself. Adapt, Resist and Mitigate. Maybe we need to ARM ourselves. All of your AIS donations will go to resist and mitigate the repercussions of what will come.

*continued on page 2*

I hate to adapt, but with your kind help, maybe we won't have to adapt as much or as soon. Your membership dues, without the AIS amount came to almost \$10,000 this year. Our board members are working on a myriad of projects to protect our lake. We have plans to eliminate the excess water, silt, E.coli, and fertilizer that the over tiling of the adjoining farmlands have been dumping into our lake for the past 30 years. We have partnered with our neighboring lakes in three adjoining counties (Kandyohi, Wright and Stearns) to collaborate on methods of detection, mitigation and spread of AIS. We monitor our lake and send samples to the best laboratories in the state. We also work with many research groups and government agencies around the state. In the past year, your board members have donated over 1800 hours of labor working for you, and the ones you share your love of the lake with. We cherish your gifts and we are trying to spend it wisely.

Put the annual meeting and pork chop dinner on your calendar now, it's an informative fun event. Saturday, July 21st, starting at 11a.m. More info to follow.

I hope you have a wonderful summer. Spend as much time on the lake as you can. Say hi to your board members and volunteers if you see them out working (or just playing).

## Northern Pike Slot Limit – special regulation

There will be an open house with public comment on the northern pike special regulation currently in place on Minnie Belle Tuesday, September 18th, from 6 to 8 pm in Litchfield at the Meeker County Courthouse, Community Room A.

The DNR has posted signs with notification at the public access sites as a reminder.

Guest speaker at the annual meeting will be Jim Lilienthal who was instrumental in getting the slot limit in place on our lake over 15 years ago.



By Julene Schatz

Greetings from Julene Schatz! I would like to introduce myself to you all as the newest member of the lake board. I was appointed to fill out the remaining term of a board member who resigned. I took over the position in January of this year and will fill this post until the July elections this summer. My husband Tom and I have a cabin in the East bay. Tom's parents purchased the home in 1986 and we had our camper on the vacant lot until we purchased the home in 2001. We currently live in Glencoe during the winter months and try to spend as much time as possible at the lake during the rest of the year. I am an RN currently working full time with the general surgeons at Hutchinson Health (both have cabins on the lake as well). We have enjoyed the lake since our teenage years and now enjoy watching our children and grandchildren experience the same fun times. We have a true gem in this lake and I hope to help protect it for all the generations to come.

# Our AIS Fund

By Steve Stepien

Since we asked all of our membership to include \$50 for the AIS reserve fund I thought you should know more about it. Here are some statements that you might want to know:

1. For the past two years none of our membership AIS funds were used to pay for the chemical treatment of Eurasian Water Milfoil (EWM) or Curly Leaf Pond Weed (CLPW). The treatment was covered by grant money from the county and “in kind” hours donated by the board members and a few volunteers. This year the funding will be the same. The areas and locations that get treated are dictated by the DNR, not the lake association.
2. GOOD NEWS – the DNR will approve treatment of Zebra Mussels (ZM) if they are found in newly infested lakes contained within a 20 acre area. We have updated our action plans to aggressively inspect the high risk areas of our lake.
3. When Zebra Mussels are found, your AIS dollars come into play, we will need to implement our action plans to contain the area and get it treated. The cost is about \$15k per acre and needs to be done twice a year. That makes it imperative that we detect them early, before they spread. Infestations usually start with juveniles that are microscopic. The first year we are on our own! After that, the DNR will take grant requests to help out in additional treatments. Their grants are less than the treatment costs but will be helpful in containing our costs.
4. Starry Stone Wart treatment is also available but limited in effectiveness and the cost is also high. We do NOT want to combat both in the same year! Additional grants from the DNR for SSW should be coming next year.
5. We are going to inspect and monitor the west side township landing this year. This area has been identified as a significant risk to our lake. The first few weeks of inspections will be funded by our AIS grant money. When that runs out we, as a lake association, will have to provide the funds. If additional funding is not available, we will most likely redirect watercraft from that landing to the DNR landing site during weekends when watercraft inspectors are in place.
6. We are exploring other funding opportunities to continue inspections or monitoring at the west side landing. The data we collect early this year will dictate the actions needed to be put in place.
7. Your AIS donations are going to be our first line of defense when we find infestations. Financial help from other agencies will become available in the 2nd year of treatment.

Thank you all for your help in this effort.

A special thank you to  
**Mark & Ann Schmidtbauer's**  
**Creative Graphics** for publishing the  
LMBIA Messenger. This service is done  
at no cost to our organization. We greatly  
appreciate your generosity!

A big thanks to  
all that helped  
with the Spring  
Road Side  
cleanup!



# Water Monitoring By Stan Kittelson

Greetings,

I hope everyone had a good winter. We now look forward to seeing our neighbors and friends on Lake Minnie Belle this summer. Eight inches of snow has just fallen as this article is being written, which means that there may be an early spring runoff at the start of the 2018 water monitoring season. The outlet on the north side of the lake (MBO) has historically had reverse flow into the lake during the spring and rainy season.

E.coli has been the main concern at MBO. However, work done by the board to get more water flow channeled into Sucker Creek has helped to mitigate this problem. We will continue to monitor this site when and if heavy rains arrive. Also, the streams and inlets into the lake will be monitored with the Secchi tube for water transparency (clarity).

Summer boating season is about to begin – enjoy Lake Minnie Belle.

*Many men go fishing all of their lives without knowing that it is not fish they are after.*  
–Henry David Thoreau

## BECKVILLE LUTHERAN CHURCH

Lake Minnie Belle Picnic Grounds

61410 - 194<sup>th</sup> St.

\*\*\* Summer 2018 Happenings \*\*\*

Join us for Lakeside Worship on Lake Minnie Belle

*With Live Music*



Worship Begins at 6pm Saturday Evenings

**Saturday June 16<sup>th</sup>**

**Saturday July 21<sup>st</sup>**

**Saturday August 18<sup>th</sup>**



For further details on the lake events  
Please Check out the Beckville Lutheran Church  
Facebook page closer to the date of the event

Beckville Lutheran Church – ELCA  
20521 600th Ave Litchfield, MN  
320-221-4840

Pastor Mindy Czycalla  
beckvillechurch@gmail.com

Summer worship time of 10 am, coffee at 9:30 am  
from Memorial day to Labor day

**Experiencing God's Love Together**  
as we serve our community  
and the world with compassion!



Beckville Church will be having three different Saturday evening services at the Picnic Grounds with live music on June 16th, July 21st, and August 18th. They will also be hosting an ice cream social on Wednesday, July 18th, from 4-7 pm also at the picnic grounds. In case of inclement weather it will be at the church.



## Update on the lake outlet (MBO)

There is a tremendous amount of effort going on to improve not only our lake but our watershed. In particular the North Fork of the Crow River. We are meeting with lake associations from Wright, Stearns, Kandyohi and Meeker to address the excessive farm tiling. The farms around us have implemented drainage tiles that our streams, rivers, and lakes can't take fast enough for the filtration systems we implemented to handle.

Our lake has an outlet into the Christensen swamp that back flows into the lake anytime we have over an inch or two of rain. That occurs because the swamp cannot hold the surge of water coming off of the farms and through their tiling system. It simply dumps farm run off back into the lake. We have been monitoring the water quality from the run off and found excessive levels of phosphorus, nitrogen and fecal (E.coli) mater.

There is now an effort to correct the situation. We have applied for permits and have a grant to create a channel through the swamp in order to provide better drainage from the lake. We have been working with the farm owners and have a workable plan to redirect the tile around the swamp. The engineering work is being done by the Meeker County Soil and Water District and we are applying for additional grants to see the work through. This effort has been broken into two phases. First is to get the channel dredged in the swamp, hopefully, this year depending on water levels otherwise we will do it through the ice next March. Second is to redirect the tile. Phase II will be done when the CRP contract comes up for renewal next year.



## BAIT

### Can I use bait in Minnesota Waters?

You can fish with a variety of live or dead bait including worms, night crawlers insects and larva. If you are fishing with minnows or leeches, a number of restrictions apply.

If you choose to keep your bait when done fishing, **you must exchange water in bait buckets with tap or bottled water prior to leaving any water body**, except when you are fishing through the ice.

You can't dispose of unwanted minnows and leeches in Minnesota waters. **Unused bait, including worms and night crawlers, should be disposed of in the garbage.**

### Do I have to bring in fresh or bottled water to transport minnows from a water body?

Yes. **You can't transport water from a lake or stream at any time in Minnesota.**

After I've kept minnows, leeches or bait, can I dispose of what I don't want back into the lake or stream?

No. **You can't dispose of unused or unwanted minnows or leeches in any Minnesota water.** Dispose of unused bait, including worms in the trash.

See pages 30 & 31 of the regulation guide

# 4th of July Fireworks on Lake Minnie Belle

Our lake has had great fireworks over the years, but times are changing, and some of the bigger displays won't be happening this year. The reasons are all about safety. The parties are still willing to donate funds but would like to have a centralized location with enough space to do the fireworks legally. The LMBIA board has agreed to organize the show but cannot contribute any funds. If you would like to donate to a special "fireworks fund," the association will collect them and have a show put on by a professional pyrotechnics company. We are still working out the details but hope to utilize the Beckville Church picnic grounds and hire Pyrotechnic Display out of Clear Lake, MN.

Because the 4th is on a Wednesday, we would like to have the show on Saturday night July 7th this year.

We would need a minimum of \$7500 in order to do a show. If you are interested and would like to donate, please fill out the form below and mail your check to LMBIA, P.O. Box 34, Litchfield, MN 55355. If we don't get the minimum, all funds will be returned. We would like to have this as an annual event. Questions? Call Steve Stepien at (612-669-8211) or Steve Hatlestad at (507-530-6246).

---

## Lake Minnie Belle 4th of July Fireworks Fund

Name: \_\_\_\_\_

Address: \_\_\_\_\_

City, State, Zip: \_\_\_\_\_

Phone: \_\_\_\_\_

Donation Amount \$ \_\_\_\_\_

Would you like this donation option added to the annual dues letter?  Yes  No

### Mail to:

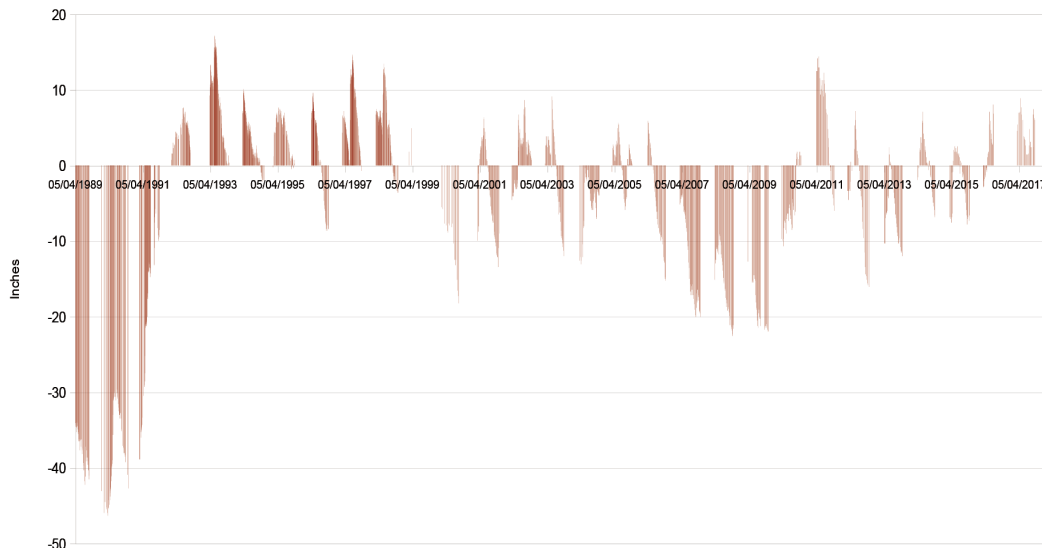
LMBIA

P.O. Box 34

Litchfield, MN 55355

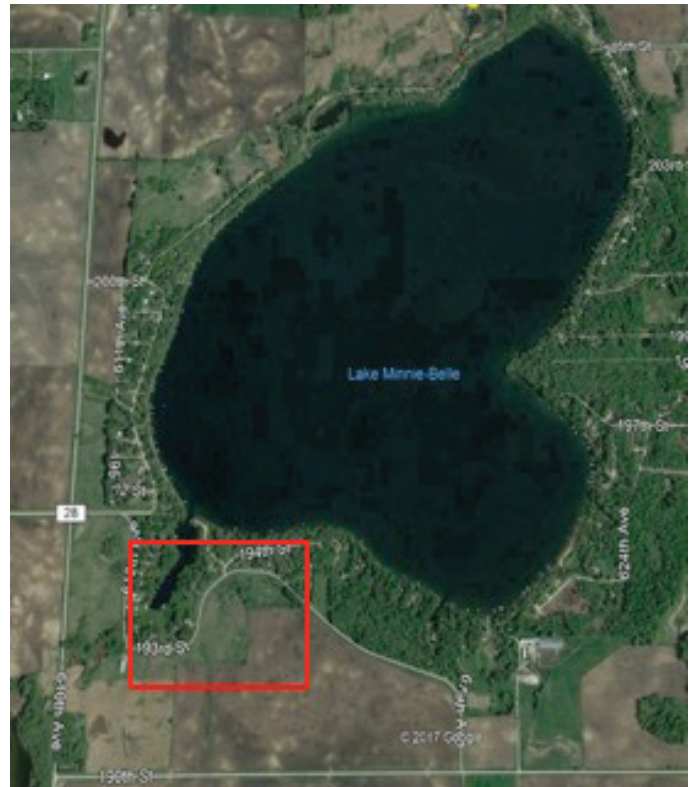
## Lake Water Levels 1989-2017

(Inches above or below normal water line)



# Minnie Belle Bees & Butterflies Project

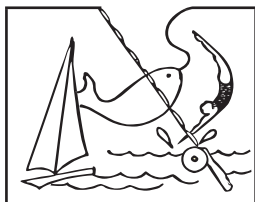
Lake Minnie Belle Improvement Association (LMBIA) has approximately 16 acres of grass land on the southwest side of the lake that acts as a settling area for runoff before it enters the lake. We have to maintain the acreage and plan on cutting some trees and shrubbery this spring. Once that is done we will conduct a controlled burn and reseed the property next year. We are partnering with Pheasants Forever and the Legislative Citizen Commission on Minnesota's Resources (LCCMR) to restore and enhance the acreage with specifically blended grass seeds to attract and nurture native bees and butterflies. Work will begin this spring and it should be completed next year. We have applied for and received major funding help from the LCCMR. We were also awarded a \$1000 grant from the Meeker County Association of Lakes (MCAL) and MN Board of Water and Soil Resources (BWSR).



A Pheasants Forever initiative will pay Minnesota landowners to be players in habitat restoration



Photo of the helicopter survey of the 16 acres we are putting into the Bees and Butterflies Project



LAKE MINNIE BELLE  
IMPROVEMENT ASSOCIATION  
PO Box 34, Litchfield, MN, 55355

### Check Us Out!

LMBIA website:  
[www.lakeminniebelle.org](http://www.lakeminniebelle.org) (under construction)

LMBIA on facebook:  
[www.facebook.com/lmbia](http://www.facebook.com/lmbia)

LMBIA Email:  
[info@lakeminniebelle.org](mailto:info@lakeminniebelle.org)

DNR website:  
[www.dnr.state.mn.us](http://www.dnr.state.mn.us)

PRESORTED  
STANDARD  
U.S. POSTAGE  
PAID  
PRIOR LAKE MN  
PERMIT NO. 23

## LAKE MINNIE BELLE BOARD OF DIRECTORS

Board meetings are held the 3rd Tuesday of each month (except December), at the Bonfire Bar & Grill at 7:00 PM.

### Tom Hess

Chair  
61335 193rd Street  
Litchfield, MN, 55355  
(320) 693-6953

### Cliff Willhite

Vice Chair/AIS  
48346 890th Avenue  
Hector, MN, 55342  
(320) 979-6313

### Laurie Boll

Secretary  
19739 623rd Avenue  
Litchfield, MN, 55355  
(320) 221-0733

### Todd Kuechle

Treasurer  
20363 624th Avenue  
Litchfield, MN, 55355  
(320) 221-2357

### Kristi Ties

Communications  
18691 Vogel Farm Trail  
Eden Prairie, MN 55347  
(952) 937-0248

### Stan Kittelson

Water Quality  
61898 193rd Street  
Litchfield, MN, 55355  
(320) 693-7351

### Steve Stepien

Projects/AIS  
20391 624th Avenue  
Litchfield, MN, 55355  
(320) 669-8211

### Steve Hatlestad

Membership/Advertising  
61705 205th Street  
Litchfield, MN, 55355  
(320) 693-3377

### Linda Larson

Projects  
19640 612th Avenue  
Litchfield, MN, 55355  
(320) 221-3061

### Robert Hantge

Legal / Acct  
1210 Lewis Avenue SW  
Hutchinson, MN, 55350  
(320) 583-1396

### Roger Jergens

Advisor  
20055 624th Ave  
Litchfield, MN 55355  
(320) 693-6357

### Julene Schatz

Projects  
19647 623rd Avenue  
Litchfield, MN, 55355  
(320) 583-6628

### Larry Rewerts

Advisor  
62146 200th Street  
Litchfield, MN, 55355  
(320) 693-2609

### Dick Baril

Advisor  
20595 624th Avenue  
Litchfield, MN, 55355  
(320) 693-2074

### Tom & Sharon Rotz

Advisors  
61269 193rd Street  
Litchfield, MN, 55355  
(715) 630-4774